

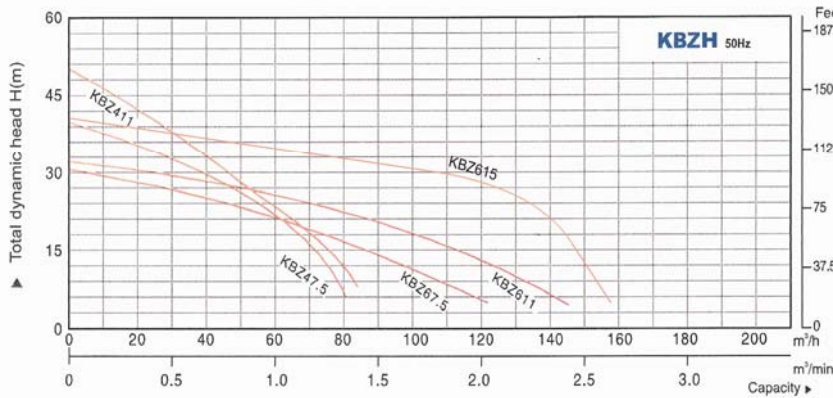
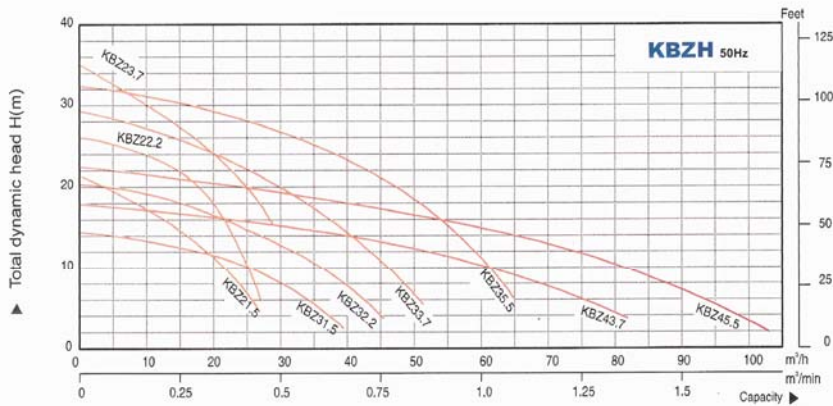


PIONEER

SUBMERSIBLE DEWATERING PUMP KBZH series

- The rigid cast iron pump body for long-lasting durability;
- The high pressure-endurance mechanical seal endures water pressure of up to 0.5Mpa, made the KBZH pumps usable at greater depth;
- Efficient motor cooling by a side-flow channel, space economy by a top outlet.

Performance



Application

- Civil engineering
- Mines, quarries, coal ore & slurries
- Sewage treatment plants
- General pumping purposes

Model (50Hz)	Outlet mm	Motor Power		Max Head m	Max Capacity		Impeller Passage mm	N.W. kg	G.W. kg	Packing mm
		kW	HP		m ³ /h	m ³ /min				
KBZH21.5	50	1.5	2	22	27	0.45	8.5	34.5	37.5	590x290x250
KBZH22.2	50	2.2	3	26	27	0.45	8.5	36	39	590x290x250
KBZH23.7	50	3.7	5	34	29	0.48	8.5	60	65	684x334x397
KBZH31.5	80	1.5	2	14.5	40	0.67	8.5	34.5	37	590x290x250
KBZH32.2	80	2.2	3	21	50	0.83	8.5	36	39	590x290x250
KBZH33.7	80	3.7	5	29	55	0.92	8.5	60	65	684x334x397
KBZH35.5	80	5.5	7.5	32	70	1.17	8.5	77	84	731x366x405
KBZH43.7	100	3.7	5	18	90	1.5	8.5	61	66	702x344x397
KBZH45.5	100	5.5	7.5	23	105	1.75	8.5	78	85	746x366x405
KBZH47.5	100	7.5	10	40	84	1.4	11.5	105	114	824x390x459
KBZH411	100	11	15	48.5	86.4	1.44	11.5	130	140	867x430x495
KBZH67.5	150	7.5	10	31	124.8	2.08	19.5	106	114	850x390x459
KBZH611	150	11	15	32	147	2.45	19.5	133	143	867x430x495
KBZH615	150	15	20	40	156	2.6	19.5	145	156	890x415x445



PIONEER

SUBMERSIBLE DEWATERING PUMP KBZH series

Specification

- Capacity: up to 156m³/h
- Head: up to 48.5m
- Water temperature: up to 40°C
- Max. water depth: 48.5m
- Cable: Length 8m
- Power: 1.5~15Kw
- Power supply: 3phase, 50Hz 380v+/-10%
- Insulation class: F
- Protection class: Ip68
- Discharge: 50mm(2")~150mm(6")

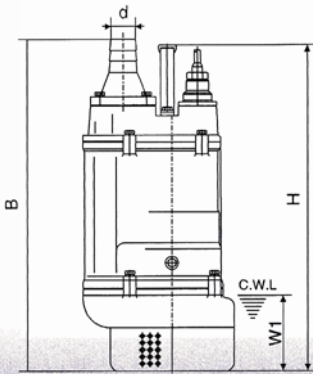
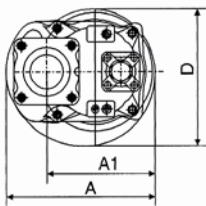
DIMENSIONS



01	Hose coupling
02	Hexagonal bolt
03	Rubber seal
04	Cable
05	Hexagonal bolt
06	Junction box
07	O-ring
08	Handle
09	Upper protector
10	Hexagonal bolt
11	Motor Protector
12	Plain washer
13	Hexagonal bolt
14	Lead wire protection plate
15	Stator
16	Packing washer
17	O-ring

18	Motor body
19	Hexagonal bolt
20	Bearing (NSK)
21	Rotor
22	Plate
23	Bearing (NSK)
24	Bearing house
25	Hexagonal bolt
26	Mechanical seal (SIC-SUS304-SIC)
27	Stud bolt
28	Plate
29	O-ring
30	Oil plug
31	Packing
32	Oil plug
33	Packing
34	Shaft sleeve

35	Pump casing
36	Labyrinth ring
37	Impeller adjusting washer
38	Impeller (high chromium)
39	Impeller thread protective cover
40	Spring washer
41	Hexagonal nut
42	Impeller nut
43	Suction cover gasket
44	Suction cover
45	Hexagonal bolt
46	Strainer
47	Stud bolt
48	Bottom plate
49	Hexagonal nut



Model (50Hz)	d	A	A1	B	D	H	W1
KBZH21.5	50	235	173	517	216	486	120
KBZH22.2	50	235	173	517	216	486	120
KBZH23.7	50	235	173	517	216	486	120
KBZH31.5	80	235	173	517	216	486	120
KBZH32.2	80	283	208	628	252	638	150
KBZH33.7	80	283	208	628	252	638	150
KBZH35.5	80	283	208	642	252	638	150
KBZH43.7	100	306	218	671	259	688	150
KBZH45.5	100	306	218	686	259	688	150
KBZH47.5	100	330	240	764	314	676	190
KBZH411	100	373	255	807	350	695	190
KBZH67.5	150	330	240	790	314	676	190
KBZH611	150	373	255	807	350	695	190
KBZH615	150	373	255	842	350	755	190